



festival international de jardins
Hortillonnages Amiens



INTERNATIONAL GARDEN FESTIVAL | HORTILLONNAGES AMIENS



1st prize "Best design or
concept of a contemporary
park or garden"

23 May
to 12 October 2025

49 artistic & landscaped creations
in the heart of the Hortillonnages
in Amiens



Une production
art & jardins
Hauts-de-France



Région
Hauts-de-France



CONTENTS

04	A unique landscaped and artistic celebration	06	The International Garden Festival Hortillonnages Amiens in a few words...
08	The presentation of the 16 th edition of the festival	10	List of gardens and exhibits
12	The new productions	20	A selection of exhibits from previous years
25	Gardens of the Somme Valley	27	The Association Art & Jardins Hauts-de-France
28	Map of the exhibits Art & Jardins Hauts-de-France	30	Press visuals
36	Practical Information		

A unique landscape and artistic celebration in the heart of a fragile natural public space, between immersion and reflection



Since its creation in 2010, the International Garden Festival has accompanied artists and visitors to the heart of a unique site: the Hortillonnages of Amiens.

For this 16th edition, the Netherlands will be our honoured guest. The Netherlands shares many similarities with the Hortillonnages, where water, landscapes and innovation combine to tell a universal story. With the support of the Dutch Embassy, two landscape groups and two visual artists have been invited to present their work to the public.

This year the festival has again achieved international recognition winning first prize for the best concept or design of a contemporary park or garden, awarded by the European Garden Heritage Network. After winning a special prize in 2022 for the Gardens of Peace, and a first prize in 2021 for the Franco-German Peace Garden in Compiègne, this award recognises our commitment and our ability to reinvent, year after year, a unique space for artistic creation.

Since its inception, the Festival has hosted 221 exhibits, 340 landscapers, architects, scenographers, and visual artists, and 620,000 visitors. These figures, as significant as they are, do not convey the human and artistic adventure that they represent. More than an exhibition, this festival is a living experience, a reflection on ecological and climatic issues, and a dialogue between nature, heritage, and contemporary creation.

Come with us on an unforgettable journey to the heart of this unique open-air museum!

Gilbert Fillinger,
Director, Art & Jardins | Hauts-de-France



art & jardins
Hauts-de-France



The International Garden Festival | Hortillonnages Amiens in a few words...

The International Garden Festival | Hortillonnages Amiens was created in 2010 by Gilbert Fillinger, then director of the Maison de la Culture in Amiens. The Festival celebrates landscape, architectural, and artistic creation in the heart of an exceptional natural site: the Hortillonnages in Amiens, an area covering over 393 hectares of marshland shaped by humans, since the Middle Ages. This jewel of green heritage, composed of islands intertwined with canals, constitutes a unique setting, blending nature, culture, agriculture and history.

The landscaped and artistic exhibits form a trail of 49 contemporary creations, accessible by boat on the Clermont Lake in Camon or on foot on the Île aux Fagots or the Île Robinson in Amiens. This exploration invites a dialogue between art and the environment, engaging all the visitors' senses and encouraging them to rethink their relationship with the landscape and ecological changes.



Île aux fagots_A&J|HDF © Yann MONEI

A creative process at the pace of the site

Each year, a call for projects is published to select artists—landscapers, architects, or visual artists to create exhibits relating to major contemporary issues: preservation of biodiversity, the fragility of the ecosystem, water resources, agriculture and sustainable food. From the initial reception of the applications to the selection process, to the preliminary visits to production in the studio or on site, several months are required to design and integrate these exhibits into the landscape, with deep respect for the environment and its natural balance.

A social and solidarity commitment at the heart of the project

Since its creation, the Festival has embraced an inclusive and committed vision, placing people at the centre of its development. It was the first organisation in France to recruit volunteers for Civic Service in 2010. Supervised by a dynamic group of mediators, these young people now form the core of the reception team at the Festival.

To support the artists and maintain the gardens, Art & Jardins | Hauts-de-France has established a professional insertion project enabling people in precarious situations to find work connected to nature and the landscape. In addition, the fruit and vegetables produced by the Festival are redistributed to local organisations in the social and solidarity economy, thus strengthening the positive impact in the area.

This year's Festival runs from 23 May to 12 October and features 49 exhibits, including 13 new exhibits, and can be discovered by boat or on foot. A unique artistic and landscaped journey, designed as an immersive interlude, where everyone can cast a curious, critical, or simply contemplative eye on this extraordinary site.



The Clermont Lake_A&J|HDF © Yann MONEI

How to visit the Festival

• By boat

> **Embarkment at the Port à fumier**, - 35 rue Roger Allou in Camon, - Maximum hire time 2.5 hours, reservation required.

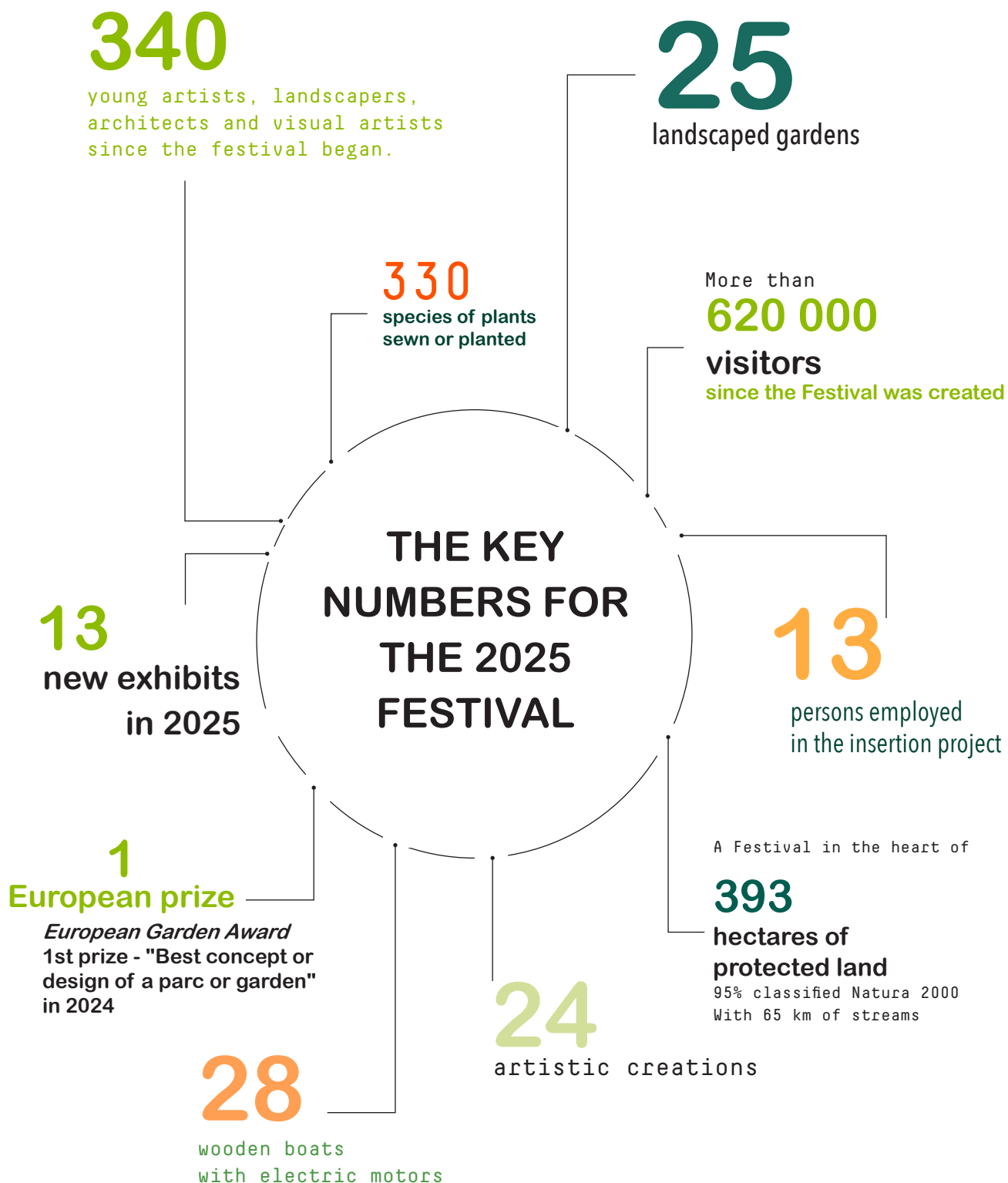
• On foot

> **Access the "Île aux Fagots" from the towpath** - at N° 43 Chemin de Halage in Amiens, free entry. Only 10 minutes from the Amiens train station, the visit takes approximately 1 hour.

Free guided tour every Saturday in July and August.

> **Île Robinson** - free entry. To access, continue along the towpath towards Camon.

The International Garden Festival | Hortillonnages Amiens, in numbers...



Presentation of the 16th ÉDITION

A poetic journey at the waterside

For this 16th edition, 13 new productions can be viewed along the two routes of the International Garden Festival | Hortillonnages Amiens, featuring 5 gardens and 6 artistic exhibits, plus 1 student project from the Faculty of Arts at the Picardie Jules Verne University in Amiens and 1 educational project with DNMAde Design students from the Édouard Branly High School.

Focus on the Netherlands

The Netherlands, Guests of Honour at the Festival

With the support of the Dutch Embassy in France, this year's Festival will showcase Dutch landscape and visual arts, with four artistic teams to discover. Two landscape works and two visual works will be unveiled to the public on 23 May.

To mark the start of this partnership, the Dutch workshop hosted the press conference for the International Garden Festival | Hortillonnages Amiens on 18 March 2025. The Dutch workshop is located at 22 Avenue Victoria in the 1st arrondissement in Paris and is a platform dedicated to Dutch cultural entrepreneurs and the cultural activities of the Embassy of the Kingdom of the Netherlands entrepreneurs France.



© Atelier_néerlandais

With the participation of Charlotte van der Woude & Jean-François Gauthier, Estelle Barriol, Fanny Bordes (ACTE studio), Erica Chladová & Robert van der Pol (LMNL), as well as visual artists Niels Albers and Mirte Van Laarhoven, this partnership encourages the sharing of influences and enriches the dialogue between French and Dutch creators. These exchanges nourish our shared reflection on the transformation of landscapes and the links between nature and culture while offering the public a fresh perspective on today's environmental and artistic issues.



Visual of the 16th edition
Graphic Guglielmo Varani

Our partners in 2025

institut pour
la **photographie**

The Hauts-de-France Institute for Photography

is once again partnering with the Festival this year, to highlight a photography project with artist Hideyuki Ishibashi.



The Faculty of Arts at the UPJV Amiens

The Festival continues to support young talent by hosting a student project from the Electro-gènes group at the Faculty of Arts at the UPJV Amiens.

Educational Activities

Édouard Branly High School and the Arts and Heritage Campus

As part of the Arts and Heritage Campus, the Festival welcomes students from the DNMAde "Object - Responsible Design section" of Édouard Branly High School to create an exhibit.

The Festival offers students a unique opportunity to practice their artistic skills and enhance their career paths.

The 2025 jury

For the Landscape category:

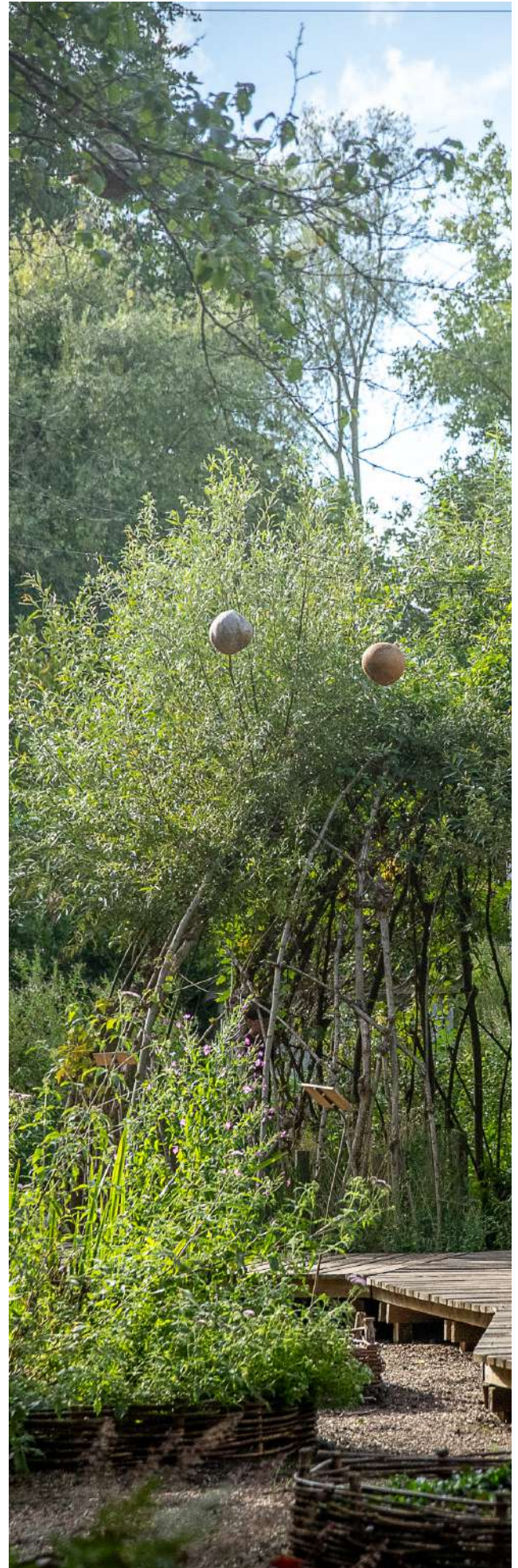
- **Chilpéric de Boiscuille**, architect, founder and former director of the National School of Nature and Landscape
- **Gilles Brusset**, visual artist and landscape architect
- **Julie Martineau**, landscape architect and lecturer at the La Cambre-Horta Faculty of Architecture in Brussels
- **Philipp Sattler**, Executive Director of Die Grüne Stadt (La Ville Verte Foundation) in Berlin
- **Jean-Philippe Teyssier**, landscape architect

For the Visual Arts category:

- **Maya Derrien**, heritage curator, head of the Modern and Contemporary Art collections at the Musée de Picardie
- **Séverine Hubard**, visual artist and previous winner at the Festival
- **Nanda Janssen**, exhibition curator, author and visual arts consultant at the Dutch Embassy in France
- **Philippe Piguet**, historian, art critic, and exhibition curator
- **Élisabeth Piot**, visual arts lecturer and co-head of "Comic Book Professions" bachelor's and master's degrees (UPJV)

To summarise...

- > Open for 5 months from 23 May to 12 October 2025
- > 22 plots and islands in the heart of the 393 hectares of protected Hortillonnages
- > 49 landscaped and artistic exhibits, including 13 new creations this year
- > 1 Self-guided electric boat tour for 2.5 hours
- > 1 Walking tour with free access for 1 hour
- > 1 Focus on the Netherlands with the arrival of Dutch artists



The 2025 Edition

Complete List of Exhibits

13 new exhibits: 5 landscaped gardens,
6 art installations, 1 student project from the
UFR des Arts - Université de Picardie Jules Verne,
and 1 educational project with students from
the Edouard Branly High School.

Amiens > The pedestrian visit to the "Île aux Fagots"

Landscaped exhibits

- *Remnant*, Andrew Fisher Tomlin & Dan Bowyer / 2014
- *Jardin a[c]cueillir*, Studio Basta / 2022
- The garden "de montagne et d'eau", Yoshiyuki Tsuji and Denis-Marie Lahellec / 2024
- *Le Jardin amphibien*, Chloé Mariey & Luc Léotoing / 2025

Visual art exhibits

- *Rien à ajouter*, Thomas Wattebled / 2019
- *Géométrie de la chute*, Sylvie Bonnot / 2020
- *Cultures*, Anne Houel / 2020
- *Akpaku*, Kokou Ferdinand Makouvia / 2022
- *ABRI*, Séverine Hubard / 2022
- *Utopies Entomologiques II*, Raphaël Emine / 2024
- *Le Pittoresque*, Gilles Brusset / 2024

Amiens > The pedestrian visit to Robinson Island (along the towpath)

Landscape Works

- *Willow at a glance*

Collection of works created by students of the DNMAde
Object - Responsible Design section from the Edouard
Branly High School / 2025

Visual art

- *Les Hortillonnages en pli*, Pierre-Alexandre Rémy / 2013

Camon > Port à Fumier Boat tour

Boarding pontoon

- *Origami*, Alexis Deconinck / 2020

Landscape Works

- *Le potager embarqué*, Florent Morisseau / 2010
- Grand prix 2012 du concours national des jardins
potagers
- *L'île de la Pépinière*, Fanny Anthoine-Milhomme and
Jean-Philippe Teyssier / 2010
- *L'île perdu(e)*, Élyse Ragueneau, Astrid Verspieren and
Xavier Dumont / 2011
- *Follow me I*, 2013 + *Follow me II* / 2020, Collectif
Blah Blah Blah
- *Sphère nourricière*, Manon Bordet-Chavanes, Marie
Bregeon et Johann Laskowski
3^{ème} prix jardin 2016 - jardin pédagogique - Société
Nationale d'Horticulture de France / 2016
- *Cabotans maraîchers*, Stéphane Larcin and Baptiste
Demeulemeester / 2019
- *Île était une fois*, Green Resistance / 2019
- *Le banquet cornélien*, Atelier du Dehors / 2020
- *Roques*, Atelier Faber / 2020
- *3 kilomètres à la ronde*, Alix Eoche-Duval & Cyril
Servettaz / 2021
- *Le rivage des cirses*, Sylvestre / 2021



Hortillonnages_A&J|HDF © Yann MONEL

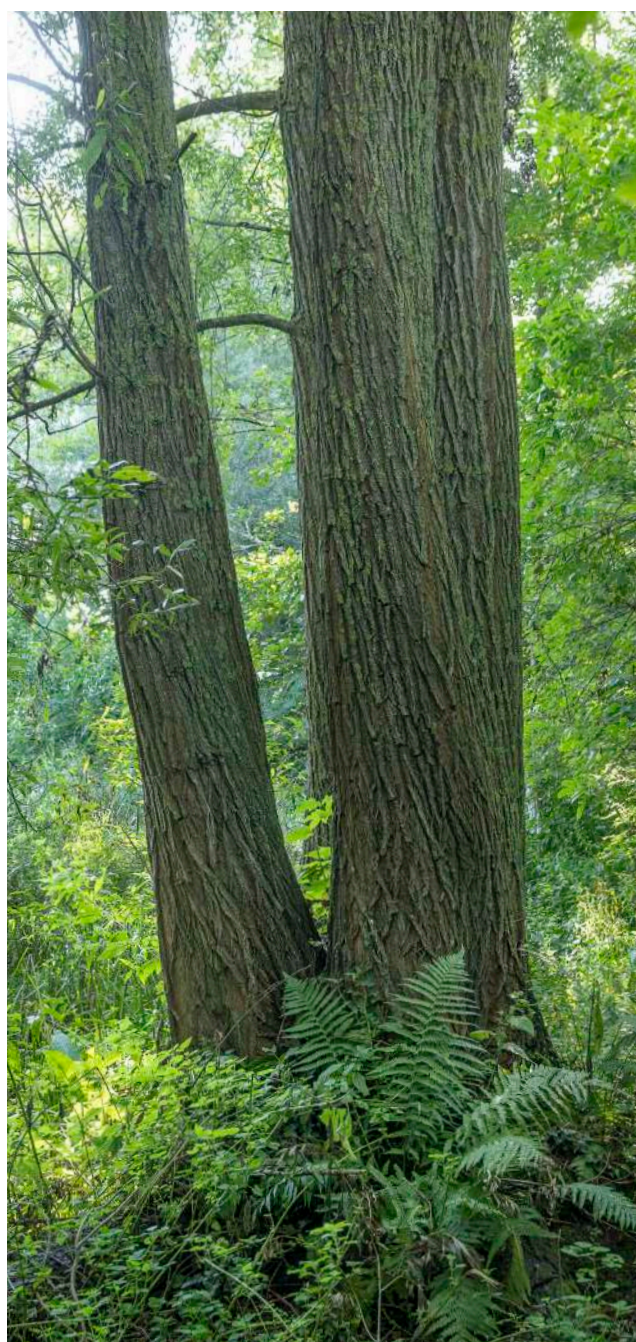
- *Maison de Graines*, Pioniersplanters / 2023
- *Hortus Labyrinthus*, Mathilde Rouch, Emma Morillon & Baptiste Gerard-Hirne / 2023
- *Les îles cadastrales*, Collectif Plein Champs & Cie / 2024
- *Théâtre Hortus*, Collectif YAM / 2024
- *Terram Revertis*, Baptiste Miremont & Orlando Clarke / 2024
- *Isola*, Manon Biscosi / 2025
- *La Somme des eaux*, Anne Mortiaux, Noémie Pons-Rotbardt and Gaspard Demorcy / 2025
- *1000 years: a garden of peat*, Charlotte van der Woude and Jean-François Gauthier / 2025
- *Loge des vagabondes*, Studio ACTE & LMNL - Estelle Barriol, Fanny Bordes (Studio ACTE), Erica Chladová and Robert van der Pol (LMNL) / 2025

Visual art

- *Miroir aux alouettes*, Boris Chouvellon / 2014
- *Hortillophones*, Raphaëlle Duquesnoy / 2019
- *Mémoire d'arbre*, Yuhsin U Chang / 2020
- *Laocoon*, Vincent Mauger / 2022
- *Céramophones*, Lana Ruellan & Baptiste Roger / 2023
- *Aquatique*, ArchiSculpteurs / 2024
- *Thermo V3*, François Dufeil / 2024
- *Un jardin à l'ouest. La fin d'après-midi*, Odysseas Yiannikouris / 2024
- *Ab aquis : From Waters*, Camille Benbournane / 2025
- *A large climbing ensemble*, Jan Kopp / 2025
- *Moonrise*, Lamarche-Ovize / 2025
- *Rétine (voir le voir)*, Hideyuki Ishibashi / 2025
- *Fragile emergence*, Mirte van Laarhoven / 2025
- *Art-i-choke*, Niels Albers / 2025

Exhibit by students of visual art at the Université de Picardie Jules Verne 2025

- *Corps de chasse*, Electro-gènes group / 2025



Hortillonnages_A&J|HDF © Yann MONEL

The new exhibits

- To visit by boat -
On the Clermont Lake



Port à fumier | *Origami*, Alexis DECONINCK_A&J|HDF © Yann MONEL

2025
Creation
Clermont
Lake

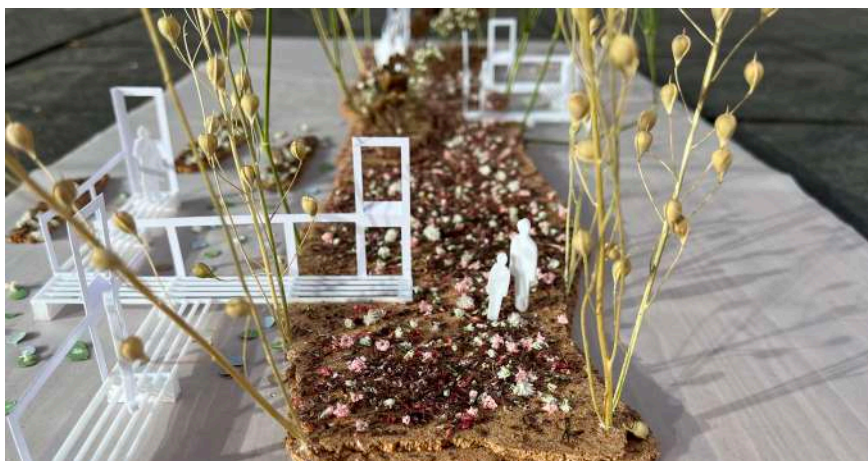
1000 years: *A garden of peat* Jean-François GAUTHIER Charlotte VAN DER WOUDE

Landscape architects - designers
Netherlands - France



Charlotte van der Woude (landscape architect at Cosmos Landschap) and Jean-François Gauthier (landscape architect at Sylva Landscape) work on public spaces in cities and the countryside, where they give pride of place to ecological processes.

They seek to develop more harmonious and sustainable environments by taking the water cycle, soil life and biodiversity as a starting point for their design.



1000 years: A garden of peat, GAUTHIER & VAN DER WOUDE_A&J|HDF
© GAUTHIER & VAN DER WOUDE

"Tout doucement" is a walk through time where visitors can discover the different stages of the peat landscape's slow evolution: it is a precious ecological environment, a heritage site, but also an area threatened by urbanisation and climate change.

It is a garden of ecological successions: the ponds and their aquatic plants, quaking mires and their mosses, meadows with colourful annual plants, cushions of peat, up to the renewal of the landscape with the death of a tree and pioneer re-colonisation. It is a cyclical landscape where each biotope has its own specific flora and fauna.

Visitors will follow a narrow elevated path, taking a slow and respectful approach to a landscape that is both ancient and extremely fragile. Despite urban and environmental pressures, this landscape is not doomed to disappear, but can regenerate, given time.

2025
Creation
Clermont
Lake

Loge des vagabondes

STUDIO ACTE

Estelle BARRIOL & Fanny BORDES

LMNL

Erica CHLADOVÁ & Robert VAN DER POL

Landscape Architects

Netherlands - France - Czech



Studio ACTE is a Franco-Dutch architecture firm that explores types of resilient constructions, inspired by vernacular architecture, lo-tech and repurposed materials. Using a design-and-build approach, the studio designs regenerative architecture that blends craftsmanship and aesthetics.

LMNL is a Dutch studio for architecture and landscape founded by Erica Chladová and Robert van der Pol, specialising in natural landscapes and architecture using natural materials.



"Loge des vagabondes", Studio ACTE & LMNL_A&J | HDF © Studio ACTE & LMNL

From spring to autumn, a canopy reflects the changes to a landscape that is edible, modest and practical. The structure's open space welcomes visitors to wander and contemplate.

A few seats, discreetly designed within the structure, offer the gatherer a moment of rest. The mirrors reflect the movement and reinforce the link between the ground and the sky. The structure seems to float above the plants. A gutter collects the rainwater and redistributes it into a collector. Designed as a collection of repurposed materials, La Loge des Vagabondes rises from the landscape, cultivating contrasts and movement.

The vegetation on the island is in three forms which reflect both the natural and cultural landscapes. The first is wild nature which manifests itself on the island's preserved shores which are covered with native flora where visitors land. The second is a cultural landscape in the form of a flower meadow, which visitors cross to reach the next garden. The third garden is all that remains of a vegetable garden where order has all but disappeared. Vegetables and herbs intertwine freely in a natural composition, that could be called an "edible disorder."

2025
Creation
Clermont
Lake

Rétine (ways of seeing)

Hideyuki ISHIBASHI

Visual Artist
Japan

institut pour
la **photo**graphie

Hideyuki Ishibashi was born in Japan in 1986 and trained in photography at the Fine Arts School of Nihon University in Tokyo before joining Le Fresnoy - National Studio of contemporary art in Tourcoing.

His work combines different techniques to explore the relationship between imagination, memory, and photography and has been exhibited at international events such as the Unseen Photo Festival and Breda Photo, and in solo and group exhibitions in Japan, South Korea, and many European countries.



"Rétine", Hideyuki ISHIBASHI_A&J | HDF © Julien PITINOME

Artist Hideyuki Ishibashi is interested in the prototypes and accidents that have shaped the evolution of technologies that capture ephemeral images and transform our perception of reality. While exploring the Makyo, a Japanese "magic mirror" from the 1st century BC, he discovered a fascinating optical phenomenon: microscopic irregularities on the surface of the mirror that generate hidden images.

This mysterious object inspired *Rétine*, an exhibit he uses to explore the relationship between what can be seen and what escapes our perception. Engraved almost imperceptibly on copper plates, images of plants and vegetables once cultivated in the Hortillonnages appear ephemerally thanks to the reflection of sunlight on the surface of inclined discs, which can be adjusted by visitors. By exploring primitive optical phenomena—reflection and projection, *Rétine* poses new questions about the very act of seeing.

The installation *Rétine (ways of seeing)* was produced by the Hauts-de-France Institute of photography with the support of Verbrugge Performance Coatings.

Hideyuki Ishibashi would like to express his special thanks to Vincent Valenduc for his assistance and technical support in the creation of this exhibit.

2025
Creation
Clermont
Lake

A large climbing ensemble

Jan KOPP

Visual Artist
Germany

Jan Kopp's work resists all attempts to be categorised or classified. He uses methods that are simple and that are rarely associated with any particular skill.

His exhibits pay careful attention to the situation, to the place and to using and transforming what is already there. His exhibits have been displayed in many places including the Centre Georges Pompidou, the Lyon Biennale, and the PS1/MOMA in New York.



A large climbing ensemble, Jan KOPP_A&J | HDF © Jan KOPP

The exhibit is based on an architectural latticework created from materials collected from the people of Amiens. The objects he has collected are all rod-shaped, such as curtain rails, fishing rods, oars, tool handles, bamboo and other items of all kinds.

Each item is linked to the others according to its size and weight, and together the rods form an edifice of mutually supporting components. The work is designed to support climbing vegetables such as beans, peas, squash, and cucumbers, and visitors can pass through among them.

Following a request for contributions, the items to build the exhibit were collected from the area surrounding the Hortillonnages and from further afield. Many of the items collected had lain dormant for years in private houses, public institutions, garages and attics. Each item is potentially part of a story, large or small, trivial or serious, forgotten or known to everyone. These elements form a diversified assembly that evokes people living close and far and presents them as a complex community, harmonious in places, and contradictory in others. The harvest of vegetables from this vertical garden will echo the harvest of the items that made its construction possible.

2025
Creation
Clermont
Lake

Ab Aquis: From waters

Camille BENBOURNANE

Visual Artist
France

Camille Benbournane creates science-fiction stories that explore ecological, environmental, and societal issues based on the space that she explores or occupies. These stories are then expressed in a constellation of works, ceramics, photos, videos, and installations, that are tangible witnesses to the scenarios she imagines.

The diversion of architectural and landscape aesthetics, always present in the background, becomes the pretext for an environmental and social analysis.



Ab Aquis : From waters, Camille BENBOURNANE_A&J|HDF © Camille BENBOURNANE

Ab Aquis means "of the waters." The exhibit is in the form of an iron and stone staircase in ruins, covered with ceramics, some of which are fountains.

This sculpture presents itself as the vestige of a civilization. A civilization that questions the visitor since there are no details about what it might have been or when it was created. The only certainty is that it was the fluctuations of the waters and sudden changes in its atmosphere which have led to its existence. This unknown civilization seems to share many similarities with the present day.

The ceramics, creatures, and hybrid plants that have grown on the architecture evoke mosses, lichens, mushrooms and even coral.

The clues are deliberately blurred to encourage metaphysical reflection: is this relic emerging from the waters of the Somme, or is it sinking into it?

2025
Creation
Clermont
Lake

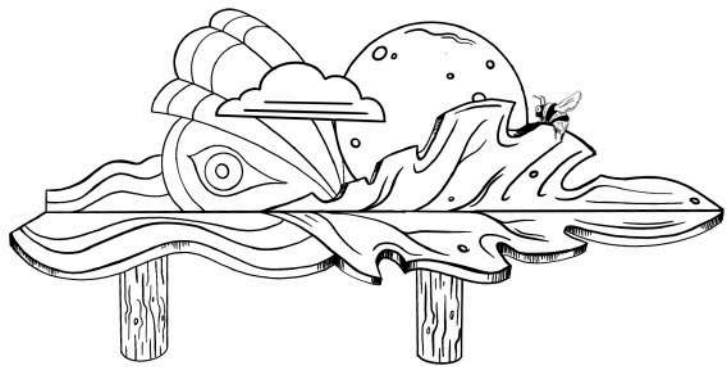
Moonrise

**Florentine & Alexandre
LAMARCHE-OVIZE**

Visual Artists
France

Florentine and Alexandre Lamarche-Ovize (1978 and 1980) have been working together since 2006. They live and work in Bobigny.

Their practice combines drawings and ceramics, drawing on different styles and modes of representation inherited from the history of art and craftsmanship. A visual language supported by the design, for the sake of the design.



"Moonrise", Florentine & Alexandre LAMARCHE-OVIZE_A&J | HDF © Florentine & Alexandre LAMARCHE-OVIZE

Moonrise is composed of earthenware and bronze. Visitors are invited to take a moment in the unique landscape of the Hortillonnages and enjoy a sculptured seat in glazed ceramic.

This bench, a symbol of rest and conviviality, is a real invitation to pause and contemplate the landscape; it embodies a place of encounter and exchange.

Its shape, material, and colour are an extension of its immediate surroundings and encourage visitors to take a contemplative look and to share it with others. Here, art and landscape enter into dialogue.

2025
Creation
Clermont
Lake

La Somme des eaux, alliances et débordements

**Anne MORTIAUX
Noémie PONS-ROTBARDT
Gaspard DEMORCY**

Visual Artist - Scenographer
Architect - Landscape Architect
PhD candidate in Hydrology
France

Anne has developed a practice featuring water and earth since the 1990s. She collects and moves rainwater, springs, rivers, wetlands... Her installations challenge the boundaries from outside and inside, exploring and engaging the terrestrial community.

Noémie conducts investigations, offers readings, and creates narratives about territories and landscapes, often within collective dynamics. She seeks to unmap the construction of the territories.



"La Somme des eaux, alliances et débordements", MORTIAUX, PONS-ROTBARDT, DEMORCY_A&J | HDF © MORTIAUX, PONS-ROTBARDT

Inspired by the river system of the Somme, this exhibit plays with the river's course and the landscapes it crosses, from the sources to the bay, its meanders, its marshes, its canal sections, its sediments...

Water drawn from the river upstream, at the sources, and downstream, the names of its tributaries, place names, the topography and the catchment area defined by the watershed are presented here as materials/elements to be connected and brought into play on this island, in this landscape of the Hortillonnages. It is a kind of water garden, made of alliances and overflows, evoking the river and its flow.

Now it's your turn to play, to walk, to follow the current, to draw water, to plunge your hands into the water.

2025
Creation
Clermont
Lake

Isola Manon BISCOSI

Landscape Architect and
Designer

Manon Biscosi is a landscape architect and designer, graduated from the École de Paysage de Versailles. Through *Espace Analogue* (2023), based in Paris, she explores the connections between art and landscape.

She seeks to enhance the sensitive relationship between man and his environment through the design of gardens and public and private spaces, and the creation of temporary or permanent outdoor art exhibits.



"Isola", Manon BISCOSI_A&J|HDF © Manon BISCOSI

The installation is located in a space that characterises the balance at work within this territory: on the banks of an island. Islands concentrate the inherent features of the site and are even more vulnerable than peninsulas.

Isola, which means solitude in Latin, encircles the island. It emphasises the balanced space between the land above water and the surface of the water. It takes the form of an ellipse above the water, with a slightly curved surface that can support living elements. The installation protects the small island territory: it acts as an outer barrier that slows bank erosion and encourages land retention. Over time, it becomes a modest piece of the living landscape, an extension of the island environment and a floating object suspended between the aquatic and terrestrial worlds within the Hortillonnages.

Its fixed presence highlights the variations in water levels: it stands thirty centimetres above the surface of the water, paying tribute to the height of exceptional floods in the past. Its disappearance is entirely possible. *Isola* thus captures the dynamics of the landscape: the boundaries of the land and the movements of the water.

2025
Creation
Clermont
Lake

Corps de chasse ELECTRO-GÈNES group Mélanie Deborah BELIC, Alicia BRENOT, Claire JEAN, Elian LAURENT, Jeanne OGER



Students, UFR of

UPJV Amiens
France

"Électro-gènes" is a student group of visual artists committed to an anti-speciesist approach. Through exhibits and performances, the group explores the power dynamics between species by subverting traditional representations.

By combining sculpture, scenography, and archives, "Électro-gènes" questions the narratives of domination and proposes experiences where human supremacy is overturned.



"Corps de chasse", Collectif ELECTRO-GÈNES_A&J | HDF © Collectif ELECTRO-GÈNES

Resulting from the collective work of young, committed visual artists, *Corps de chasse* is an exhibit that subverts the symbols of hunting to reverse the relationship between humans and animals. In a space reconstituting a hunting cabin, trophies, human limbs made of plaster, and other subverted objects depict a universe where humans are no more than a curiosity.

A fence keeps the visitor at a distance, inviting them to become aware of their role in the logic of domination. The staging plays on the inversion of power relations and the construction of an ambiguous space, where the line between observation and captivity blurs. Through the work of accumulating and subverting objects, the exhibit encourages reflection on violence rendered invisible and the traces left by stories of domination.

Through *Corps de chasse*, the "Électro-gènes" group questions the place of humanity in the Anthropocene and invites us to rethink the boundaries between domination and vulnerability.

2025
Creation
Clermont
Lake

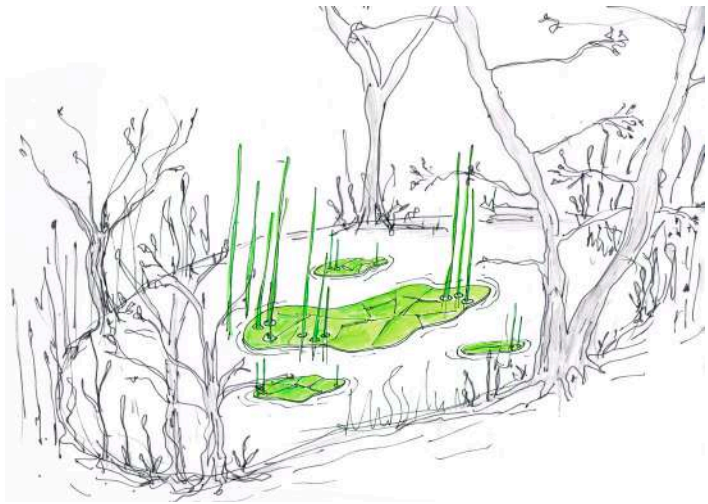
Fragile Emergence Mirte VAN LAARHOVEN

Visual artist - architect
Netherlands



Dutch artist and landscape architect, Mirte Van Laarhoven explores the interactions between mankind and nature through creations that blend poetry and eco-responsibility. Her artistic approach is based on the meticulous observation of ecosystems and a quest for a more harmonious dialogue with nature.

She creates exhibits that celebrate biodiversity while raising awareness of the need to preserve it. An artistic vision that combines ecological commitment and aesthetic contemplation.



Fragile emergence © Mirte van Laarhoven

This exhibit by Mirte van Laarhoven is on a small island in the Hortillonnages and celebrates new life. At its centre is a ceramic basin where plant-like forms emerge, sharp, fresh, and full of potential. Glazed in a vibrant green, the work evokes the energy of early spring and the joy of growth and renewal.

Beneath this celebration lies a deeper tension: the exhibit explores the balance between promise and impermanence, between vitality and decay. Cracks on the surface suggest a desire to freeze a fleeting moment, the fragile beginning of a new season. If this moment is held too tightly, it risks collapsing in on itself: what begins to blossom could just as easily wither.

Fragile Emergence invites quiet reflection. What lies beneath the surface? And what might become of a fresh promise, given the time and the space to grow? On this island, visitors are encouraged to pause, to observe, and to lose themselves in a layered landscape of green.

2025
Creation
Clermont
Lake

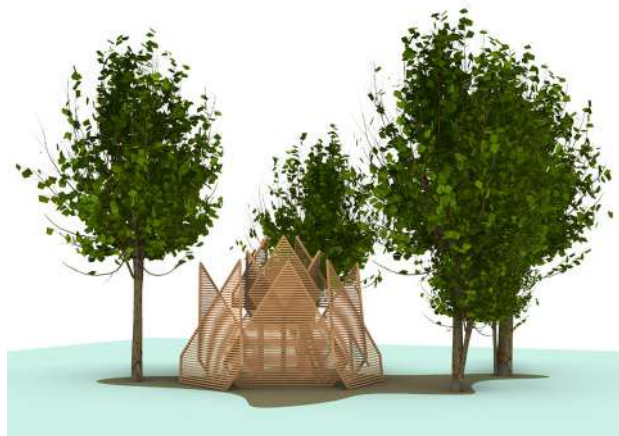
Art-i-choke Niels ALBERS

Visual Artist
Netherlands



Niels Albers is a Dutch artist based in Amsterdam. He received a Bachelor of Fine Arts at the Gerrit Rietveld Academy and a Master of Interior Architecture at the Sandberg Institute.

Co-founder of the Fabulous Future collective, Niels Albers conducts research on the impact of all forms of life, particularly the human species, on the planet's ecosystem. Fascinated with origins, games, maps, and routes, his approach blends anthropocentric concerns with an architectural passion.



"Art-i-choke", Niels Albers © Niels Albers

According to legend, the Cathedral of Notre Dame in Amiens was built on a field of artichokes donated by a medieval market gardener who cultivated the fertile soil of the Hortillonnages. In recognition of the gift, a statue of him was placed on the façade. However, the artichoke did not arrive in France until the late 15th or early 16th century whereas the cathedral was built between 1220 and 1269, making this legend an early case of "fake news."

Niels Albers' exhibit for the festival is inspired by the form of the artichoke, with its layered leaves mirrored in a contemplative structure. This exhibit is located on one of the smallest islands on Clermont Lake and invites visitors to reflect on the stories we tell, the importance of fact-checking and the evolving nature of culture.

The Hortillonnages looks wild but is entirely shaped by the human hand. This contrast between nature and cultivation is at the heart of this exhibit. Step onto the upper platform and consider: what is native, what is beauty, and how do we shape the world?

The new exhibits

- Pedestrian visit -
To the "Île aux Fagots"



Île aux Fagots_A&J|HDF © Yann Monel

2025
Creation
Île aux
Fagots

Jardin amphibien

Chloé MARIEY
Luc LÉOTOING

Architect - Landscaper
France

Luc Léotoing and Chloé Mariey are landscape architects and designers. They teach at the École Nationale Supérieure of Architecture in Clermont-Ferrand and work as project managers in their respective fields.

At the intersection of their disciplines, both develop artistic research that focuses on geological singularities and associated environments. Their work resembles open artworks depicting the dynamics of the living.



"Jardin amphibien", Chloé MARIEY, Luc LÉOTOING_A&J|HDF © Chloé MARIEY, Luc LÉOTOING

Consisting mainly of market garden plots in the last century, the Hortillonnages have moved away from food production. Artificialized or in some cases abandoned, the banks have lost their ecological role over time. The "amphibian garden" project is therefore above all an attempt to reconnect the land and aquatic environments.

The exhibit seeks to create fertile banks where the garden, a primary food source, also becomes a complex ecosystem.

Like a riparian forest, the garden unfolds both horizontally and vertically, creating dynamic interfaces. In the shade of the vertical garden, the water here is slightly cooler than elsewhere on the site, encouraging the return of certain species and biodiversity.

On the land side, the blue garden unfolds in strips and encourages visitors to sit by the water: the blue is a reference to "Isatis tinctoria" or woad which was once cultivated here to produce the blue pigments of Amiens, used by royalty.

- Pedestrian visit - To the Robinson Island

2025
Creation
On the île Robinson

Willow at a glance

Students - DNMADe du
lycée Edouard Branly

Students: Objective -
Responsible Design
France



The DNMADe (National Diploma in Arts and Design) "Responsible Design Training Course" at the Edouard Branly High School in Amiens trains future designers in sustainability and social progress. Environmental issues are major concerns in today's society. The programme places the user at the centre of the creative process and is committed to sustainable design. The project presented here is led by the Hauts-de-France Campus of Trades and Qualifications and coordinated by Alexandra Epée from Amiens, a designer, scenographer and artisan.



Willow at a glance_A&J|HDF © A&J|HDF

The Île Robinson is accessible on foot via the towpath and at its extremity, it has a fabulous view of the Clermont Lake. The students of the DNMADe Responsible Design Training Course at the Edouard Branly High School in Amiens invite you to explore this area, rich in biodiversity, to discover their creations made from woven willow. These exhibits, planted, structured, and gently woven, serve as visual displays that accompany the fertile history of this former marshland. These creations, designed to evolve over time with the appearance of foliage, thus serve as grids, reading frames, meeting points, shaded or resting spaces. They serve various functions conducive to a more in-depth exploration of the site. This collection of projects is an expression of their sensibilities, and their perspectives on this island through the prism of ecology, a central theme of their training.

Participants in the project: Quentin Broos, Mathéo Caramia, Julie De Witte, Méli-Rose Guichard, Sacha Hammermüller, Thaïs Klepmann, Maïa Landreau, Lilou Leboeuf, Zacharia Longuet, Cheïma Meddah, Emy Ramsawmy, Emmy Surville, and Emerick Vanaker.

The project is supervised by Laurence Aubourg, Julie Duverne, and Yonah Riollet and is coordinated by Alexandra Epée.



Île aux fagots_A&J|HDF © Yann MONEL

A Selection of exhibits from previous years

Multi-annual collection



Clermont Lake_A&J|HDF © Yann MONEL

2024
Creation
Clermont
Lake

Aquatique ARCHISculpteurs

Vincent BREDIF, Julien FAJARDO

Architect-Sculptor
France

ArchiSculpteurs group: Julien Fajardo is an architect and Vincent Brédif is a sculptor.

Their creations meet at the crossroads of sculpture and architecture on projects that they call "ArchiSculptures".



"Aquatique", ArchiSculpteurs_A&J | HDF © ArchiSculpteurs

The experience begins aboard a boat moving through the islets of the Hortillonnages and then continues with a walk to a cypress hedge. Behind this screen of vegetation, the *Aquatic* ArchiSculpture unfolds like some large shrub made from wooden poles decorated with bands of colour. In the middle of the structure, there are three shelters, three shapes each designed for different ways of dreaming, enjoying the sky and taking the time to observe the fauna and flora.

Aquatique is a way of seeing and being aware of our body in this space, and of questioning the way in which we live. A place where the concordance between architecture and sculpture converges.

Aquatique is designed for the place where it was made and considers the physical, climatic and ecological characteristics of its environment. The wood comes from local sawmills and preference has been given to rapidly growing softwood species. Only manual and small power tools were used. Objective: to be in the landscape and to be the landscape.

2024
Creation
Île aux
Fagots

Le Pittoresque Gilles BRUSSET

Visual Artist
France

Gilles Brusset is a visual artist and landscape architect who graduated from the Schools of Architecture of Paris Belleville and Landscape of Versailles. He produces artistic projects under his name and manages projects for gardens and public spaces, with his agency Paysarchitecture. He produces "landscaped sculptures", contextual works that sometimes include large expanses of soil and plants.

Gilles Brusset has received numerous awards, including the National Prize for Urban Art (2014). He worked with Marc Blume and Francesca Liggieri to design "The Third Train", a Garden of Peace in the Clearing of the Armistice in Compiègne (Oise). It received first prize for a contemporary garden at the European Garden Award (European Garden Prize, 2021).



"Le Pittoresque", Gilles BRUSSET_A&J|HDF © Pierre-Yves BRUNAUD

To transform the landscape into an image using kaleidoscopic games, this landscape sculpture opens like a multitude of magical portals onto the archipelago of the Hortillonages gardens and creates a mirage in the landscape. Intrigued, we begin by seeing a sort of slight shift in the landscape, it seems as if one image is sliding over another. The light takes over; 1000 reflections create gaps through which the gaze and the imagination kick in. When we enter under the sculpture, we experience a labyrinth of mirrors, an aviary of light or a cage of reflections where the exit is not always obvious.

The sculpture is between us and nature, preserved, idealised and restored. Crossing the airlock into the sculpture is like going on a journey into a proliferating and shimmering structure that seems to emerge from the ground. At one moment, there is an optical illusion, and the landscape is transformed into an image. Through visual perception, through optical illusion, we no longer differentiate between what is a reflection and what is seen by the direct impression of light on the retina. Framed by mirrors, the landscape becomes a reflection of itself, an image. The exhibit ceases to be an object. It appears like a mirage on the banks of the Somme. The sculpture tapers on its contours and blends into the landscape. We cannot detach it from its context, we no longer know how to separate the form from the background. In the air, the mixture of the three-dimensional orthogonal frame of the sculpture with the picturesque undulations of the Hortillonages gardens provokes an optical reaction a formal combustion.

2024
Creation
Île aux
Fagots

Le Jardin "de montagne et d'eau" (帯と庭) - san sui tei

OBI TO NIWA
Denis-Marie LAHELLEC &
Yoshiyuki TSUJI
Landscapeers / Japan - France

Yoshiyuki Tsuji is a Japanese landscaper who graduated from the University of Japan. He created his garden design and construction company "NIWAYA", taking advantage of his Japanese culture and his professional experience in France.

Denis-Marie Lahellec is a French landscaper, urban planner and architect by training. He completed his training at the University of Tokyo for 3 years. He designs and creates Japanese-inspired gardens with his company "OBI-Jardins". In addition to creativity, he aims to pass on knowledge by organising conferences, consultancy and training.



Le Jardin "de montagne et d'eau", OBI TO NIWA_A&J|HDF © OBI TO NIWA

The garden "de montagne et d'eau" is thought of as a bridge between the natural and cultural heritage found in this region and the faraway fantasy heritage of Japan.

The exhibit is based on the observation that there are landscape similarities between the slag heaps of Northern France and Mount Fuji in Japan. The same iconic shape, the same structure of stony materials and a similar dark, shimmering colour. Another astonishing similarity is their origins. The first is the exhumation of ashes, slag and stones from the bowels of the earth then the omnipresence of fire with coal for burning on the French side and molten lava on the Japanese side. Lastly, an obvious graphic similarity in the imagination because the cone is a symbol of regional identity for one and a registered national trademark for the other.

The choice of the Hortillonages where peat was extracted from the marshes and used as a fuel is undeniably in the symbolism of the project. To illustrate this cultural bridge, the exhibit resembles a space for walking. At the entrance, a woven willow fence partially hides the landscape to reveal a door opening onto a pond. A path leads the visitor to a mountain, planted hills, a peninsula, rocks and a waterfall. At the heart of the exhibit, a terrace invites the visitor to rest, contemplate and meditate.

**This work was created in honour of the Japanese sports delegations that were welcomed to Amiens during the Paris 2024 Olympic Games, with the support of Amiens Metropole*

2024
Creation
Île aux
Fagots

Utopies Entomologiques II

Raphaël EMINE

Visual Artist
France

Raphaël Emine's ceramic sculptures allow fluids to flow through them and provide a home for plants and are colonized by insects and bacteria. His current work combines 3D printing and traditional modelling techniques to create sculptured habitats for non-humans.

At the crossroads of natural sciences, sculpture and design, Raphaël Emine invites us to generate new manufacturing processes to invent future ideas.



"Utopies entomologiques II", Raphaël EMINE_A&J|HDF © Yann MONEL

This architectural wonder provides nesting sites for insects in the heart of the Hortillonnages ecosystem in Amiens. Made from traditional ceramic combined with ceramic 3D printing, it is designed as an environment for insects but also for living plants, decomposing plants and reserves of water. *Entomological Utopias II* reflects on biology and life, it is driven by dreamlike inspirations at the crossroads of natural sciences, sculpture and design.

This sculpture raises the possibility of an inter-species architecture that is inclusive of non-humans by connecting different living things that occupy the same space. A kind of functional habitat sculpture designed in a surrealist way with galleries, tunnels, corridors and balconies. Using the latest 3D modelling experiments, these sculptures are inspired by biomimicry and mathematical models created by living things. The resulting forms evoke worlds that cannot be placed between vernacular habitat, fantastic architecture, the underwater world, the foliage of the tree and the rhizome. They aim to accommodate several species of living things at different stages of their life cycles, from the egg to the larva, to the adult.

2024
Creation
Clermont
Lake

Les Îles cadastrales

By the group
PLEIN CHAMPS ET CIE
Valentin BURDLOFF, Kevin
GAUTHIER, Perrine MALAUTIER

Architects - Landscapers
France

"Plein Champs et Compagnie" is a group of 3 landscape designers, Valentin Burdloff, Kevin Gauthier and Perrine Malautier, they all graduated from the Blois School of Nature and Landscape.

They share a common vision of the landscape and the project: working with it and not against it, working for the living, be interested in what is "already there". Through the realisation of their projects, the group seeks to display and enhance the identity of the place where it is exhibited.



"Les Îles Cadastrales", Plein Champs et Cie_A&J|HDF © Yann MONEL

Previously open and cultivated, the Hortillonnages site tends to degrade when plots are abandoned which leads to the ageing of the vegetation and the canals silting up. To remain viable, the plots and their surroundings must be maintained by the owners to prevent them from disappearing. The balance of this exceptional natural site is therefore fragile.

The Cadastral Islands project questions the situation by researching the notion of private property and cadastral boundaries and then marking out the boundaries of the plots with wooden posts. In time, these posts could retain sediments and be used to [re]create the islets, thus bringing them into line with the land register. The project proposes to illustrate this process by establishing three floating vegetated islands inside the plot: the pioneer island, the reed island and the fixed island.

The original situation in the land register is no longer the case. This landscape exhibit, using the opposite approach, makes the land register a lever in favour of ecological renaturation and questions how we map our environment.

2024
Creation
Clermont
Lake

Thermo V3

François DUFEIL

Visual Artist
France

François Dufeil is a visual artist who trained in Climate Engineering at the Compagnons du Devoir. He then graduated from the Beaux-Arts of Angers and the Decorative Arts of Paris. Sharing his artisanal know-how is at the very heart of his work.

He reuses materials and industrial waste and gives it a new life by creating useful sculptures.

François François Dufeil invites artists to activate the sculptures in public: musicians, painters, ceramists.



"Thermo V3", François DUFEIL_A&J | HDF © Yann MONEL

This exhibit is at the crossroads of an ornamental item made for the garden, and a banal architectural object shared by the locals. The exhibit uses the principle of capturing energy from decomposing garden waste. The energy is released in the form of heat and circulates in three hydraulic sculptures as a tribute to the methods of Jean Pain in the 1970s.

This energy micro-station operates by placing wood chips in the stainless-steel tank to exploit their calorific potential. A heat exchanger is placed in the centre of the tank. The organic materials are added and soaked in water to form a digester which activates the thermophilic bacteria. The digester is regularly fed with organic matter produced by the gardeners. At the end of the decomposition cycle, the compost that remains is used as a fertiliser.

Bacteria are part of the fermentation process of organic matter. Heat is created in the centre of the tank, where the wood chips become a powerful generator of energy. The three tubular sculptures filled with water are positioned around this central shape and heat circulates around these hand-made sculptures using the thermosyphon effect.

Visitors can interact with the sculptures, touch them, experiment with them, or sit on them to contemplate the landscape.

2024
Creation
Clermont
Lake

Théâtre Hortus

Collectif YAM

Quentin BOURGUIGNON, Marin
DELEBECQUE, Luc DOIN

Architect - Market gardeners -
Carpenter
France

After a meeting during their architectural studies, the professional careers of Marin Delebecque, Luc Doin and Quentin Bourguignon have diversified, ranging from carpentry to market gardening. Their activity was born from a desire to combine these skills, in an approach where their different activities and artistic experiences would be complementary.

In the form of micro-architectures, their creations address recurring themes linked to the environments where they are situated: craftsmanship, local resources, and the use of bio-sourced materials.

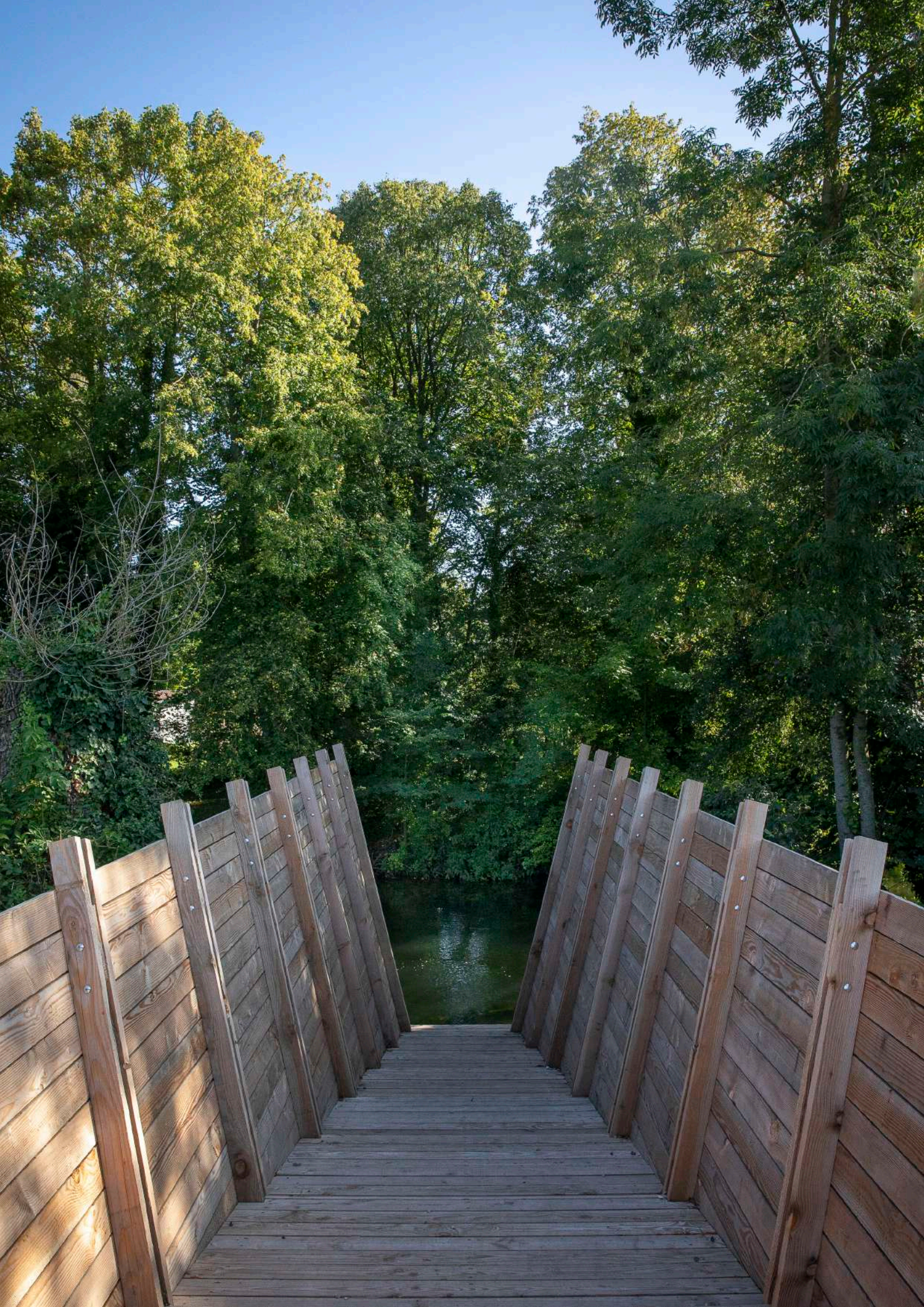


"Théâtre Hortus", Collectif Yam_A&J | HDF © Yann MONEL

Perceived and designated as an exceptional "natural" area, the current face of the Hortillonages has been shaped for centuries by human activities, most of which have since disappeared. To observe the site is like looking at a landscape that has been shaped over time. This exhibit focuses on this paradox and questions the distinction between natural and artificial, wild and developed, a place for production and a place for performances.

Théâtre Hortus is designed as a play in which each visitor has a part to play as they contemplate and intervene in the environmental landscape which is a living setting. Actor or spectator, the roles are not fixed. Everyone is involved in the production of this landscape in its current state. A landscape exists through the eyes of those who contemplate it, like a play to its audience.

Thanks to a proscenium form, the exhibit shows the play that is played out daily and questions the roles of each person. The symmetry of the installation suggests a theatre where neither the backstage nor the audience is concealed by the curtain. It is therefore difficult to know which side everyone is on and who is who. The structure is made from regional wood in a traditional half-timbered style with a textile infill. The textile, which is the same as the theatre curtain, is made from linen grown and woven in Normandy and hand-dyed in the region using woad the emblematic plant of Amiens.



Art & jardins | Hauts-de-France along the waterside

The gardens of the Somme valley



FLUX, Antoine MILIAN - Eclusier Vaux_A&J|HDF
© Art&jardins|HDF_HR

Just as the Hortillonnages were born from the Somme River, Art & jardins | Hauts-de-France has continued with its meander along the riverbank by creating the Gardens of the Somme Valley.

The association is engaged in a reconquest of the banks of the river, with landscape and artistic creations upstream and downstream of the Hortillonnages. From the source of the river to the Bay of Somme, the Gardens of the Somme Valley are so many gateways between towns and villages, past and future along the banks of the Somme.

After the gardens in Abbeville (La Bouvaque), Long (Maison eclusière) and St-Quentin (Parc d'Isle, Aisne), three new gardens were created in 2024 in Pont-Rémy, Corbie and Éclusier-Vaux. A fourth will see the light of day in 2025 in Lamotte-Brebière.

As part of the same dynamic, these last four gardens were supported by the Amiens Métropole and Somme Departmental Council as part of the call for proposals "Perspectives 2" made during the Amiens application as the European capital of culture in 2021.



Seven exhibits and gardens participate in the landscape, artistic and poetic journey from Saint-Quentin to the Bay of the Somme via Amiens:

- *Coup d'œil entre deux eaux* by the group Les Jardins Nomades in Abbeville in the centre of the Bouvaque municipal park. It was awarded the Album Prize for young architects and landscapers by the Ministry of Culture in 2016
- *Le Jardin destock* by Mathieu Gontier in Long next to the lockkeeper's house by the Wagon Landscaping group - It was awarded the Album Prize for young architects and landscapers by the Ministry of Culture in 2016
- *La Faille* by Élise & Martin Hennebicque in Saint-Quentin in the Parc d'Isle. It was awarded the album prize for young architects and landscapers by the Ministry of Culture in 2018
- *Flux* by Antoine Milian in Eclusier-Vaux next to the lockkeeper's cottage
- *Les Matrices* by Matthieu Pilaud in Corbie next to the old lockkeeper's house
- *Le Déversoir* by the Atelier Quand-Même in Pont-Rémy next to the old lockkeeper's house
- An artwork by Vincent Mauger in Lamotte-Brebière next to the lockkeeper's house is programmed for the autumn of 2025



Les Matrices, Matthieu PILAUD- Corbie_A&J |HDF
© Yann MONEL



Art & jardins | Hauts-de-France

A committed association

To link cultural projects and societal projects while questioning the foundations and challenges of tomorrow

- To support landscape, architectural and visual artistic creation with particular attention to young creators.
- To raise visitors' awareness of art, the environment, peace, resilience and to meet new audiences, particularly younger generations and people far removed from culture.
- To enable residents, using a participatory and civic method, to re-appropriate their history and heritage, and to transmit and promote them.
- To create shared social, cultural and economic dynamics by working with local economic and social actors and developing the attractiveness of the territories.
- To deploy a proactive and inclusive social policy using an integration project, approval for volunteering in civic service and a partnership with the prison administration for Works of General Interest (TIG).
- To federate energies by forming international partnerships around our approach, our values and our artistic, ecological and Peace preoccupations.



Setting of an artwork | Étang de Clermont_A&J|HDF © Yann MONEL



Étang de Clermont_A&J|HDF © Yann MONEL

The International Garden Festival | Hortillonnages Amiens is supported by the Hauts-de-France Region, the Somme Departmental Council and Amiens Metropole.

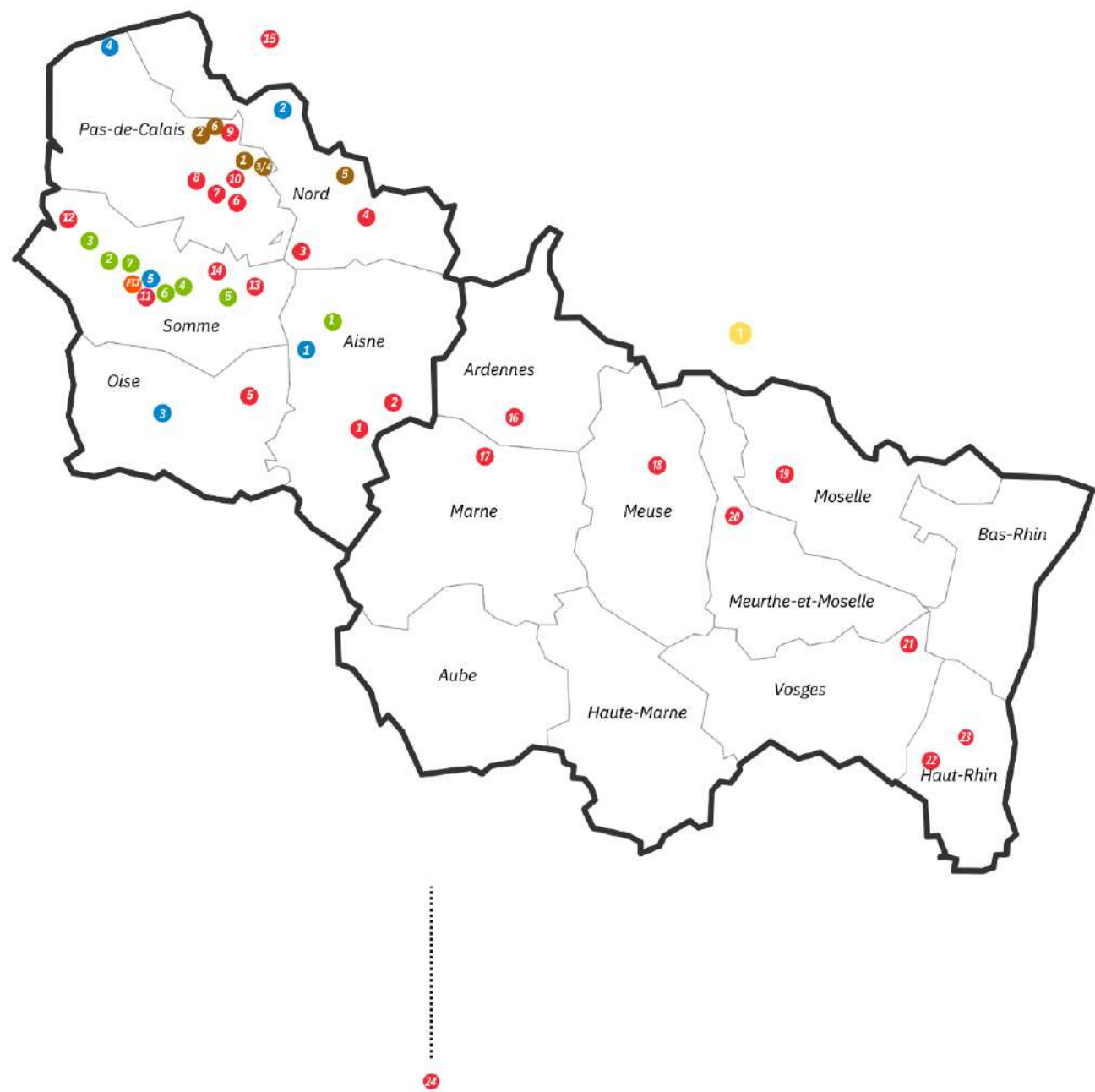
Institutional partners: Co-financed by the European Union - The Netherlands Embassy in France - Prefecture of the Hauts-de-France region – Maison de la Culture in Amiens – Civic Service Agency - Europa Nostra – The Direction of Cultural Affairs for the Hauts-de-France region.

Patrons: Groupe Caisse des Dépôts-Mécénat – Gueudet Frères – Bijouterie Flinois – La Brasserie Jules – Fondation d'entreprise Crédit Agricole Brie Picardie - InExtenso Picardie - Green link - Sopelec - Engie - Fondation de France - Vinci pour la cité.

Media Partners: Ici Picardie, Télérama, Le Bonbon, Le Courrier Picard, Le Figaro.

Art & Jardins I Hauts-de-France

Map of the artistic and landscaped productions



Jardins de la Paix | Hauts-de-France

Aisne

Braine

- 1 Jardin de la Paix danois / 2022

Craonne

- 2 Jardin de la Paix allemand / 2018
- 2 Jardin de la Paix italien / 2018
- 2 Jardin de la Paix marocain / 2018

Nord

Flesquières

- 3 Jardin de la Paix franco-britannique / 2020-2021

Le Quesnoy

- 4 Jardin de la Paix belge / 2018
- 4 Jardin de la Paix néo-zélandais / 2018

Oise

Compiègne - Clairière de l'Armistice

- 5 Jardin de la Paix franco-allemand / 2018

Pas-de-Calais

Arras

- 6 Jardin de la Paix écossais / 2018

Neuville-Saint-Vaast

- 7 Jardin de la Paix tchèque et slovaque / 2019
- 7 Jardin de la Paix polonais / 2023

Notre-Dame-de-Lorette

- 8 Jardin de la Paix français / 2018-2020

Richebourg

- 9 Jardin de la Paix portugais / 2021-2022
- 9 Jardin de la Paix indien / 2024-2025
- 9 Jardin de la Paix britannique / 2024-2025

Vimy

- 10 Jardin de la Paix canadien / 2018

Somme

Amiens

- 11 Jardin de la Paix australien / 2024

Noyelles-sur-Mer

- 12 Jardin de la Paix chinois / 2024

Péronne

- 13 Jardin de la Paix irlandais et nord-irlandais / 2018

Thiepval

- 14 Jardin de la Paix anglais / 2018
- 14 Jardin de la Paix gallois / 2018

Jardins de la Paix | Belgique

Passchendaele

- 15 Jardin de la Paix français / 2019

Jardins de la Paix | Grand Est

Ardenne

Vouziers

- 16 Jardin de la Paix tchèque et slovaque / 2022

Marne

Navarin - Souain-Perthes-lès-Hurlus

- 17 Jardin de la Paix nord-américain / 2024-2025

Meuse

Douaumont

- 18 Jardin de la Paix tunisien / 2025

18

- 18 Jardin de la Paix de l'Afrique sub-saharienne / 2025

- 18 Jardin de la Paix de l'ex Indochine / 2025

- 18 Cheminement / 2025

- Jardin de la Paix malgache / 2025

Moselle

Metz

- 19 Jardin de la Paix italo-russe / 2025

Meurthe-et-Moselle

Montauville

- 20 Jardin de la Paix algérien / 2025

Vosges

Ban-de-Sapt

- 21 Jardin de la Paix français / 2025

Haut-Rhin

Wattwiller - Hartmannswillerkopf

- 22 Jardin de la Paix franco-allemand / 2024-2025

Soultzmatt

- 23 Jardin de la Paix roumain / 2025

Jardins de la Paix | Italie

Agrigento

- 24 Jardin de la Paix franco-italien / 2025

Potagers dans les lycées | Hauts-de-France

Aisne

- 1 Chauny / 2021

Nord

- 2 Lille / 2021

Oise

- 3 Clermont-de-l'Oise / 2021

Pas-de-Calais

- 4 Calais / 2021

Somme

- 5 Amiens / 2021-2022

Jardins citoyens | Bassin minier

Pas-de-Calais

- 1 Calonne-Ricouart - ancienne cité Quenehem

4 jardins / 2020-2021

- 2 Grenay - Îlot Saint-Louis

1 jardin + 1 verger / 2020

- 3 Loos-en-Gohelle - Maison d'Ingénieur

1 jardin / 2022

- 4 Lens - Musée du Louvre

1 jardin / 2023

- 6 Vermelles

2 jardins / 2024

Nord

- 5 Raismes - Chevalement de Sabatier

1 jardin / 2022-2023

Jardins de la Vallée de Somme

Aisne

- 1 Saint-Quentin / 2018

Somme

- 2 Abbeville / 2018

- 3 Long / 2018

- 4 Corbie / 2024

- 5 Eclusier-Vaux / 2024

- 6 Lamotte-Brebière / 2025

- 7 Pont-Rémy / 2024

Festival international de jardins Hortillonnages Amiens

- FIJ Depuis 2010

Art & jardins | Hauts-de-France

- 1 LUGA (Luxembourg Garden)

PRESS VISUALS



Ab Aquis: From waters, Camille BENBOURNANE_A&J|HDF © Camille BENBOUR-

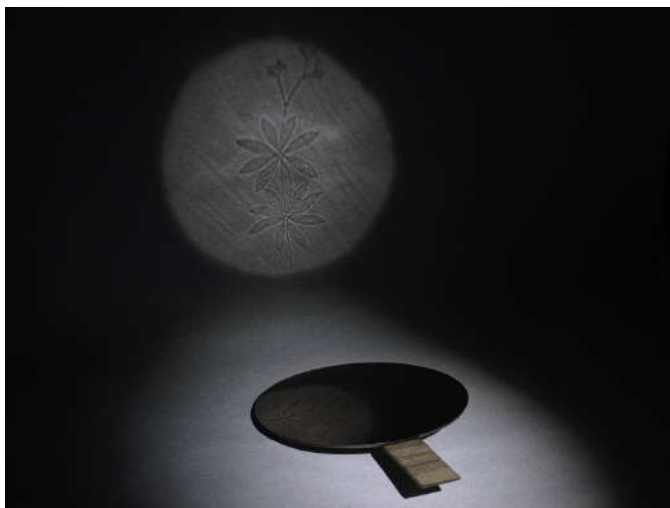


"Isola", Manon BISCOSI_A&J|HDF © Manon BISCOSI



"La Somme des eaux, alliances et débordements", MORTIAUX, PONS-ROTBARDT, DEMORCY_A&J|HDF © MORTIAUX, PONS-ROTBARDT

All visuals are available on our website
artetjardins-hdf.com in the press section
at the bottom of the page.



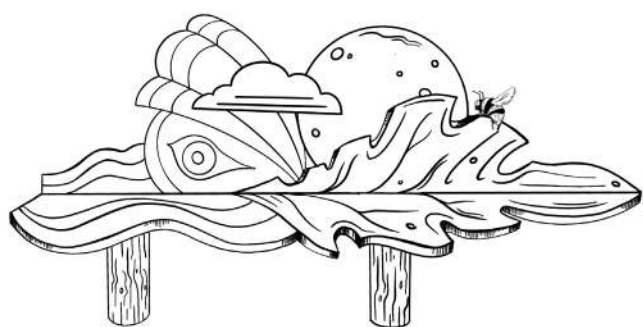
"Rétine", Hideyuki ISHIBASHI_A&J | HDF © Julien PITINOME



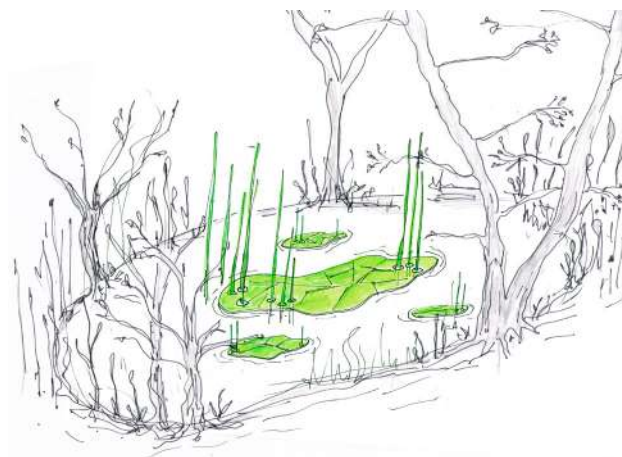
"Corps de chasse", Collectif ELECTRO-GÈNES_A&J | HDF © Collectif ELETRO-



A large climbing ensemble, Jan KOPP_A&J | HDF ©Jan KOPP



"Moonrise", Florentine & Alexandre LAMARCHE-OVIZE_A&J | HDF
© Florentine & Alexandre LAMARCHE-OVIZE

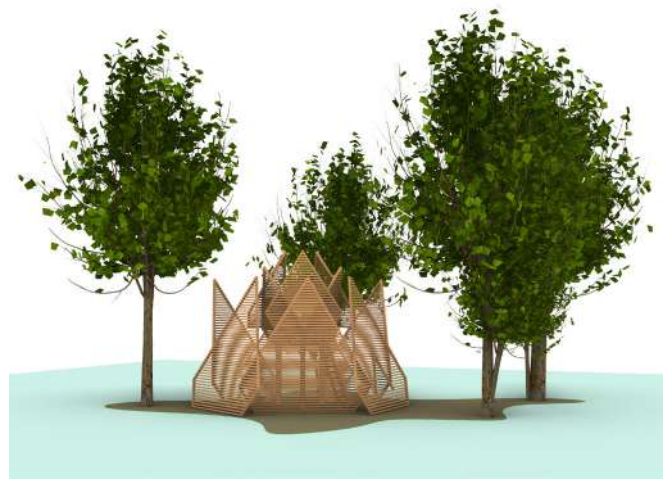


Fragile Emergence © Mirte VAN LAARHOVEN

All visuals are available on our website
artetjardins-hdf.com in the press section
at the bottom of the page.



"Loge des vagabondes", Studio ACTE & LMNL_A&J | HDF
© Studio ACTE & LMNL



« Art-i-choke », Niels ALBERS © Niels ALBERS



"Jardin amphibien", Chloé MARIEY, Luc LÉOTOING_A&J|HDF © Chloé MARIEY, Luc LÉOTOING



1000 years: A garden of peat, GAUTHIER & VAN DER WOUDE_A&J | HDF
© GAUTHIER & VAN DER WOUDE



Maison de Graines, Pioniersplanters_A&J|HDF © Yann MONEL



Céramophone, Lana RUELLAN & Baptiste ROGER_A&J|HDF © Yann MONEL



Akpaku, Kokou Ferdinand MAKOUVIA_A&J|HDF © Yann MONEL



Hortus Labyrinthus, Emma MORILLON, Baptiste GÉRARD-HIRNE & Mathilde ROUCH_A&J|HDF © Yann MONEL



Aquatique, ArchiSculpteurs_A&J | HDF © Archisculpteurs



Le Pittoresque, Gilles BRUSSET_A&J|HDF © Pierre-Yves BRUNAUD



Laocoon, Vincent MAUGER_A&J|HDF © Yann MONEL



Sphère nourricière, BORDET-CHAVANNES, BRÉGEON, LASKOWSKI_A&J|HDF © Yann MONEL



Mémoire d'arbre, Yuhsin U CHANG_A&J|HDF © Yann MONEL



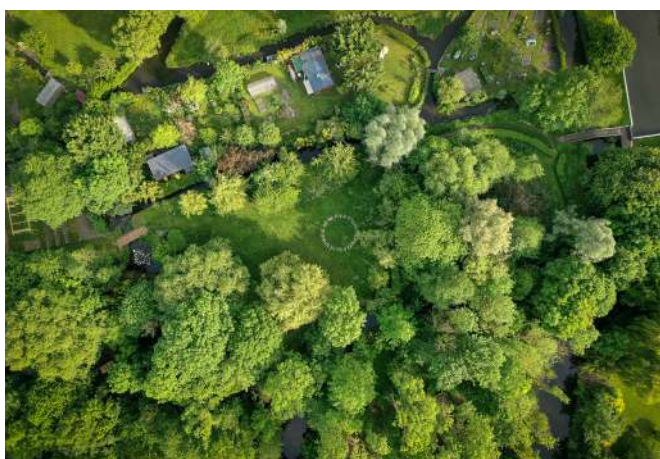
*Étang de Clermont*_A&J|HDF © Yann MONEL



Hortillophones, Raphaëlle DUQUESNOY_A&J|HDF © Yann MONEL



Utopies entomologiques II, Raphaël EMINE_A&J|HDF © Yann MONEL



*Île aux fagots*_A&J|HDF © Yann MONEL



3km à la ronde, EOCHE-DUVAL, SERVETTAZ_A&J|HDF © Yann MONEL

PRACTICAL INFORMATION

From 23 May to
12 October 2025

In the centre of the city of Amiens, in the department of the Somme and in the Hauts-de-France region, the exceptional site des Hortillonnages welcomes the International Garden Festival | Hortillonnages Amiens for the 16th year.

Two ways to experience this unique visit to the Hortillonnages.

Boat Tour

CAMON > Port à Fumier

Hire an electric boat

Duration: 2.5 hours maximum

Weekdays from 1 p.m. to 7 p.m. / Weekends from 10 a.m. to 7 p.m.

Last departure at 4:30 p.m.

Online booking recommended:

www.artetjardins-hdf.com

Information: +33 6 78 53 55 92

Access to the boarding pontoon:

At the « Port à Fumier », 35 rue Roger Allou,
80450 Camon

Free parking - rue Roger Allou

Bus from Amiens train station

(Line 7 - To CAMON, get off at the Republique stop)



Étang de Clermont_ AGJ|HDF © Yann MONEL

Walking Tour

AMIENS > Île aux Fagots

Free pedestrian visit

1 hour walk

From 12:30 p.m. to 7:00 p.m.

*Free guided tours on Saturday
at 5:00 p.m. duration 1 hour*

Access from the Beauvillé Bridge

follow the towpath to

43 Chemin de halage, 80000 Amiens

Or from the "L'Hortillonne" footbridge

141 rue de Verdun, 80000 Amiens

Information: +33 6 78 53 55 92

Port d'Amont paid parking

Vadé car free parking

Paid parking on Boulevard de Beauvillé

AMIENS > Robinson Island

Walking tour

Free access via the towpath towards Camon

Pets are not allowed on either site.

Pushchairs must be left at reception.

Opening Days

May-June/September-October: Wednesday to Sunday

July-August: Tuesday to Sunday

Open 14 July and 15 August

Languages spoken

French – English

TARIFFS

Visit by boat

The ticket office is open from mid-May 2025

Free for children under 3

Tariff according to the number of passengers.

1 to 2 passengers 25€/boat

3 to 4 passengers 36 €/boat

5 to 6 passengers 47€/boat

A maximum of 6 passengers/boat (including children under 3)

Group rates available from 10 people: €36 per boat for 6 people. (Associations, businesses, etc.)

Guided tours available on request - Thematic tours are also available (family/nature and plants/artistic creations/environment and ecology, etc.)

For more information, contact Marianne Anselin:
m.anselin@artetjardins-hdf.com / +33 6 37 25 74 70

These prices include a contribution to the maintenance of the streams, donated to the Hortillonages Canals Association.



Étang de Clezmont_ A63|HDF © Yann MONEL

Event Organisation

Corporate events can be organised on-site. (seminars, social gatherings, themed tours, etc.)

Request a quotation from Art & Jardins Hauts-de-France:
Karl Tourais / k.tourais@artetjardins-hdf.com

TRAVELLING TO THE FESTIVAL

Travelling by train

There are daily services to Amiens. The train station is an 11 minute walk to the free pedestrian visit to the International Garden Festival I Hortillonages Amiens, at the "Île aux Fagots".

Travel times:

Paris – Amiens: 1 hour 7 minutes

Lille – Amiens: 1 hour 16 minutes

Rouen – Amiens: 1 hour 50 minutes

Brussels – Amiens: 2 hours 10 minutes

Travelling by car

Distances

Paris – Amiens : 143 km

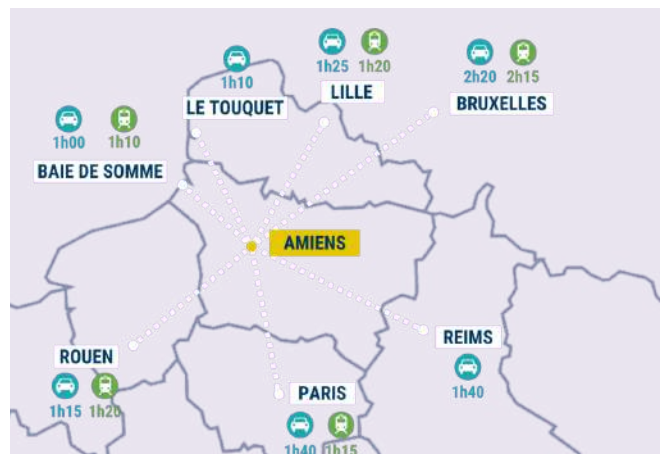
Lille – Amiens : 131 km

Rouen – Amiens : 125 km

Brussels – Amiens : 233 km

Travelling by bicycle

The free pedestrian to the "Île aux Fagots" of the International Garden Festival I Hortillonages Amiens is directly accessible from the cycle path that follows the towpath all the way from Ham to the Bay of the Somme.



Located 1.5 hours from Paris by motorway, Amiens is at the intersection of the A16 motorway, which serves the Île-de-France region, and the A29 motorway, which provides connections to Normandy and the Grand Est region.

A29 Normandy Motorway: Exit 31 or Exit 51 from Saint Quentin.

A16 Motorway: Exit 18 from Paris and Beauvais, exit 20 from Abbeville and Boulogne.

[illegible]



Art & Jardins | Hauts-de-France

56 rue du Vivier - 80000 Amiens
www.artetjardins-hdf.com

Director

Gilbert Fillinger
+33 (0)3 22 52 52 96
+33 (0)6 09 40 14 26
g.fillinger@artetjardins-hdf.com

Director of Attractiveness and Communications

Hélène Rigolle
+33 (0)6 45 79 13 82
h.rigolle@artetjardins-hdf.com

Press Contacts - C La Vie - L'Agence

Maylis de Bazelaire +33 (0)7 86 50 58 71
maylis@c-la-vie.fr
Ingrid Cadoret +33 (0)6 88 89 17 72

Press Kit

Publishing Director, Gilbert Fillinger
Publication Coordination, Hélène Rigolle and
Zoé Gambier
Production/Design, Agence C La Vie
Ingrid Cadoret, Maylis de Bazelaire and Zoé Gam-
bier



Cofinancé par
l'Union européenne

Hortillophones, Raphaëlle Duquesnoy_A&J | HDF
© Yann Monel